

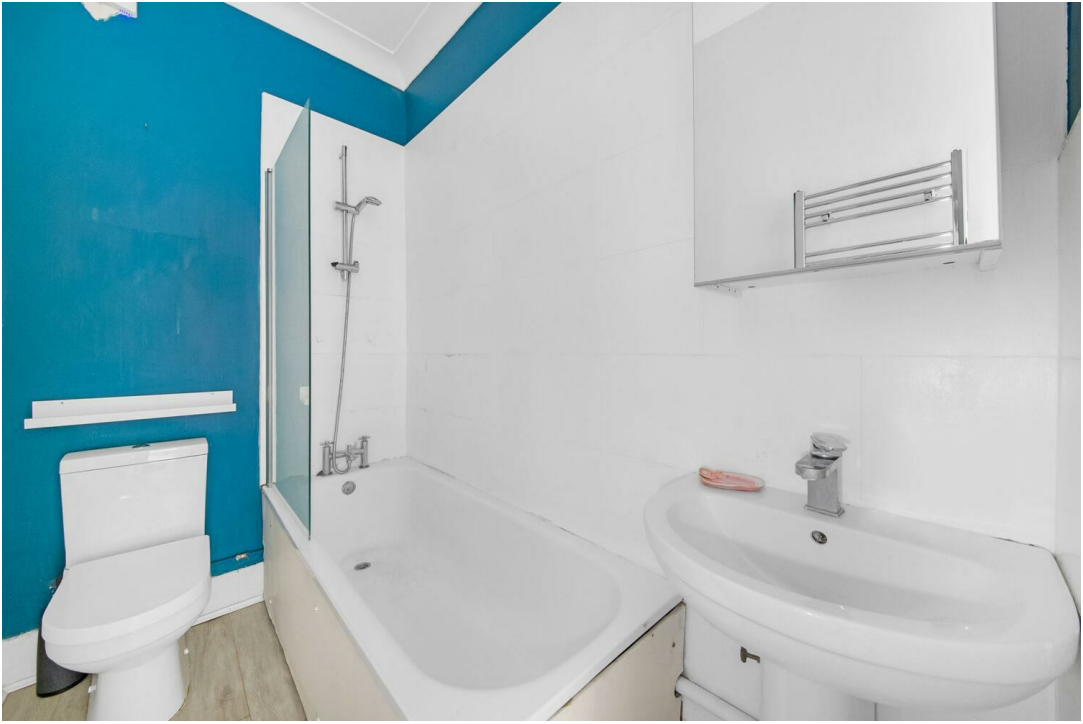


Anerley Road, SE20 | £1,600 Per Calendar Month

020 8702 9333

crystalpalace@pedderproperty.com

pedder
We live local



In General

- Top floor conversion
- One bedroom
- Open plan kitchen
- Shower above bath
- Communal garden
- Close to transport & amenities
- Close to Crystal Palace park
- Unfurnished
- Available July

In Detail

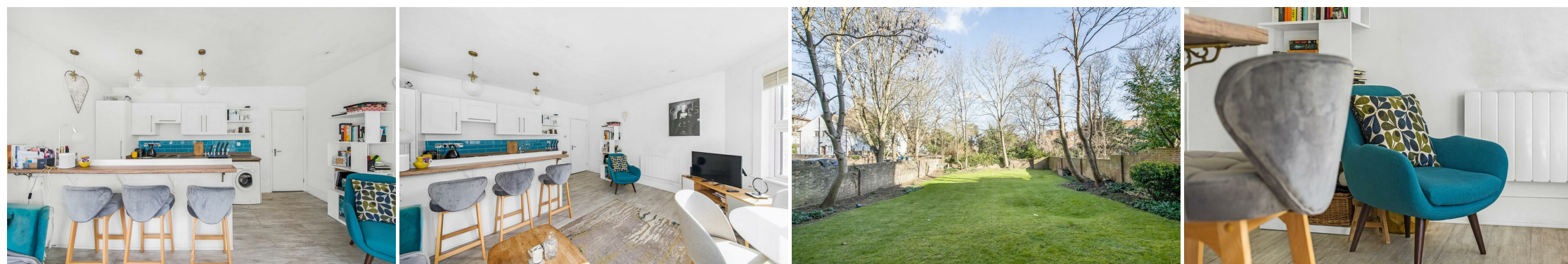
A well-proportioned and charming top floor (Third) one bedroom conversion in Anerley to rent.

Finished to a good standard throughout and comprising fitted integrated kitchen with breakfast bar / naturally bright reception room with enough space for a dining area, spacious double bedroom to the rear and bathroom with shower above bath. Complete with storage cupboard, double glazed windows, solid wood flooring and use of a communal garden.

Anerley Road, SE20 is perfectly positioned for easy access to both Crystal Palace and Anerley train station. The vast open space of the iconic Crystal Palace Park is close by also, whilst the local amenities line Anerley Road and the popular Triangle just beyond, offering an array of shops, cafes, bars and restaurants.

The ideal rental for a couple or single professional seeking a modern yet cosy home in an enviable location.

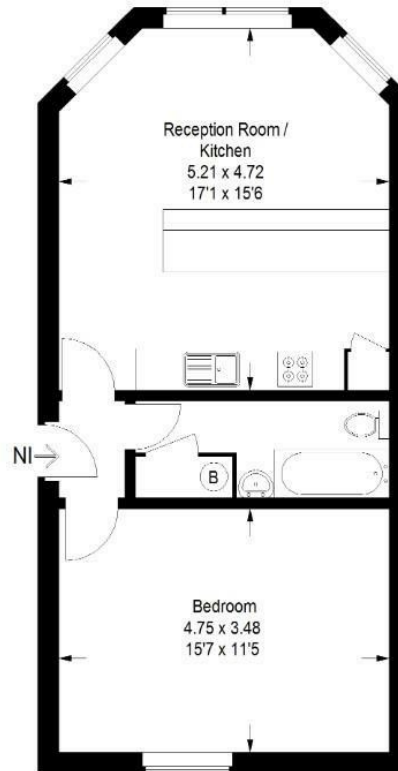
EPC: E | Council Tax: Bromley, B | HD: £369.23 | SD: £1,846.15 | Offered unfurnished | Available July



Floorplan

Anerley Road, SE20

Approximate Gross Internal Area
48.3 sq m / 520 sq ft



Third Floor

Copyright www.pedderproperty.com © 2022 These plans are for representation purposes only as defined by RICS - Code of Measuring Practice. Not drawn to Scale. Windows and door openings are approximate. Please check all dimensions, shapes and compass bearings before making any decisions reliant upon them.

Energy Efficiency Rating		Current	Potential
Very energy efficient - lower running costs			
102 plus) A			
81-101) B			
69-80) C			
55-68) D			
39-54) E	41		55
21-38) F			
1-20) G			
Not energy efficient - higher running costs			
England & Wales		EU Directive 2002/91/EC	

Pedder Property Ltd trading as Pedder for themselves and for the vendor/landlord of this property whose agents they are, give notice that (1) these particulars do not constitute any part of an offer or contract, (2) all statements contained within these particulars are made without responsibility on the part of Pedder or the vendor/landlord, (3) whilst made in good faith, none of the statements contained within these particulars are to be relied upon as a statement of representation or fact, (4) any intending purchaser/tenant must satisfy him/herself by inspection or otherwise as to the correctness of each of the statements contained within these particulars, (5) the vendor/landlord does not make or give either Pedder or any person in their employment any authority to make or give representation or warranty whatsoever in relation to this property.